

# The Cuby News

Publication by the Shire of Cuballing  
PO Box 13 Cuballing WA 6311

Monthly publication for Cuballing, Yornaning and Popanyinning

May 2019



A project to enhance school bus shelters was conducted on 17<sup>th</sup> April 2019 during Youth Week 2019 .

The event was attend by 13 local youth painting spectacular murals that have been mounted on the inside of each bus shelter which are located at Alton, Russell and Derby streets within the Cuballing townsite. The outside of the bus shelters were also painted in vibrant colours.

The murals are Cuballing themed and were designed and stencilled by Helen Elliot. Helen and a several local volunteers assisted in the preparation.

This project was funded by the Department of Communities and organised by the Shire of Cuballing



# REDEVELOPMENT — MEMORIAL PARK CUBALLING



**Office Opening Hours:**  
**Monday—Thursday,**  
8.30am—4.30pm  
**Friday,**  
8.30am—4.00pm

PO Box 13  
Cuballing WA 6311  
Ph: 08 9883 6031  
[enquiries@cuballing.wa.gov.au](mailto:enquiries@cuballing.wa.gov.au)  
[www.cuballing.wa.gov.au](http://www.cuballing.wa.gov.au)

## REDEVELOPMENT — MEMORIAL PARK CUBALLING

The Shire of Cuballing intend to commence an upgrade of the Cuballing War Memorial Park later in 2019 and would welcome your comments on the proposed works.

The Shire has prepared photoshopped images on the opposite page to indicate how the upgraded Memorial Park may look. The project involves:

1. Connecting electricity to the site.  
Electricity at the memorial would improve the ability to run services at the Memorial and allow efficient irrigation of the gardens and lawn. This could also provide future lighting at the memorial.
2. Installing bollards.  
The Memorial Park is currently defined by plants and pine pole barriers. The pine logs are deteriorating and will become a hazard. Hardy recycled plastic bollards would define the memorial area and will improve access.
3. Removing trip hazards and reticulating lawn area.  
The lawn at the memorial is currently at two levels, retained by low concrete kerbing. Removing the kerbing, building the lawn up to the level of brick paving will remove trip hazards and improve access. The area immediately south of the Memorial is to be planted to lawn to connect the area to the adjacent car park and seating area.
4. Installing automatic lawn reticulation.  
Reticulation of the gardens and lawn will reduce ongoing gardening costs to Council while improving the ability to maintain the area in the best condition.
5. Expand the paving around the memorial monuments.  
The existing paving around the memorial would be expanded to be larger in area to provide a larger area for services and to remove the rosemary growing beside the memorial foundation. The connection

between the pavers and lawn would not involve a change in height.

6. Replace the flag pole.  
The existing flag pole has been recently refurbished in 2015 by the Cuballing Men's Shed and is already showing signs of rust.
7. Install seating.  
At least two recycled park benches are planned for the eastern side of the memorial park, under trees. The benches would be the same colour as the bollards on the west side of the memorial.
8. Art work.  
An artwork on the west side of the memorial is planned but not yet finalised. A relatively flat work, that fits in line with park benches and slightly in front of nearby trees, would define the boundary of the memorial. Such an art work would be easily from passing traffic and pedestrians on Alton Street. Ideas and proposals on possible artworks are particularly encouraged.

The planned works do not include a permanent shelter. Currently the park is not used for picnics or long events. The functions held at the site are mostly very short and associated with functions held at the Cuballing Hall or Cuballing Tavern. A large shelter may also overshadow the War Memorial itself.

The Shire is now seeking your written comments by email or by post or delivered to the Shire Office on the proposed activities by the close of business on Tuesday 4<sup>th</sup> June 2019.

Office Opening Hours:  
Monday—Thursday,  
8.30am—4.30pm  
Friday,  
8.30am—4.00pm

PO Box 13  
Cuballing WA 6311  
Ph: 08 9883 6031  
enquiries@cuballing.wa.gov.au  
www.cuballing.wa.gov.au



## COUNCIL SHORTS

### Administration Trainee

The Shire of Cuballing has again received funding to employ another Administration Trainee. The funding allows for the Shire to provide education and workplace training over 12 months in a range of local government administration activities.

For further details see the advert elsewhere in the Cuby News or contact Ms Bronwyn Dew, Deputy CEO, at the Shire office. Applications close on Thursday 9<sup>th</sup> May 2019.

### Cuballing Golf Club — Licenced Area Expansion

The Cuballing Golf Club have sought support from the Shire of Cuballing for their application to extend their licenced area under their Restricted Club Licence to allow for sale of alcohol on the Golf Course. The licenced area exemption would allow the club to legally sell and consume alcohol, under the conditions of their Restricted Club Licence, on areas on the golf course.

This expansion would allow the club to maximise their fund raising activities on their larger golf events. The Golf Club are required to raise funds to fully maintain the golf course premises which they lease from Council.

At their April Meeting, Council conditionally supported the application seeking the Club to investigate ways to allow unsupervised access to the course by younger golfers.

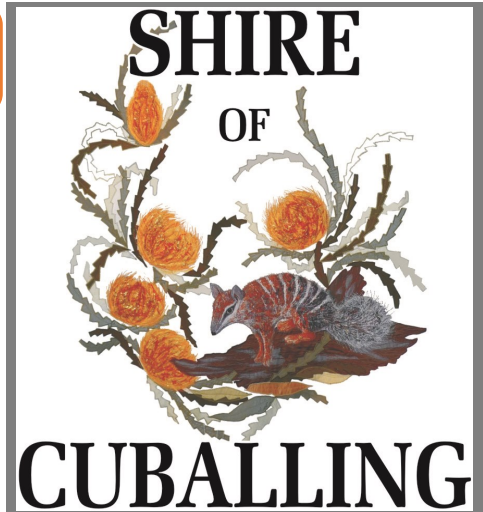
### Popanyinning Council Meeting

The Shire of Cuballing held their April Council Meeting in the Popanyinning Hall. This was the first Council Meeting held in Popanyinning for some considerable time. A small, but lively, number of local residents from Popanyinning and Cuballing attended the meeting and took the opportunity to ask questions of the Council.

Council meetings are held on the third Wednesday of each month, other than January. All meetings are open to the public, commence at 2pm and start with at Public Question Time. Agendas and Minutes of each meeting are available on the Shire website.

### ANZAC Day Ceremonies

ANZAC Day was recognised by local residents at services in Cuballing and Popanyinning. At the Cuballing service, Cr Mark Conley opened proceedings and Cr Roger Newman laid a wreath. At the Popanyinning ceremony Cr Tim Haslam laid a wreath on behalf of Council.



### COUNCILLOR CONTACTS

Cr Mark Conley.....0417 503 343  
president@cuballing.wa.gov.au

Cr Eliza Dowling.....0488 775 095  
cr.dowling@cuballing.wa.gov.au

Cr Scott Ballantyne.....0418 814 761  
cr.ballantyne@cuballing.wa.gov.au

Cr Dawson Bradford....0427 877 055  
hillcroftbradford@gmail.com

Cr Tim Haslam.....0429 112 976  
haslams1@bordnet.com.au

Cr Roger Newman..... 0428 836 036  
roger@lintonparkfarms.com

### UPCOMING COUNCIL MEETINGS

Wednesday 15<sup>th</sup> May 2019

Wednesday 19<sup>th</sup> June 2019

Wednesday 17<sup>th</sup> July 2019

All meetings are open to the public and will commence at 2.00pm with fifteen minute Public Question Time at the commencement of each meeting.

Agenda's for each meeting are included on the Shire website by the weekend prior to each meeting.

Minutes of all Council meetings are available on the Shire website as soon as possible after each meeting.

### Office Opening Hours:

Monday—Thursday,  
8.30am—4.30pm

Friday,  
8.30am—4.00pm

PO Box 13  
Cuballing WA 6311  
Ph: 08 9883 6031  
enquiries@cuballing.wa.gov.au  
www.cuballing.wa.gov.au

# CUBALLING GOLF COURSE DEBATE

It has come to the attention that the Cuballing Golf Club is looking at extending their Liquor Licence from just the club house to the whole golf course.

What this means is that if your family members are under the age of 18 they will not be able to enter the golf club grounds at any time unless escorted by an adult guardian who must remain in sight of them at all times, so if the minors even paying the course fees while on holidays cannot enter by themselves unless escorted by a parent or proper guardian, because if the club get the liquor licence for the whole golf course it will be under the same regulations for minors entering the tavern or local pub where minors have to have a parent or legal guardian with them.

Sport is what should be encouraged for our children to participate in whether they are any good or not and I thought that golf is a sport. So it appears that the Cuballing Golf Club wants to change that from sport to a booze session all day when they play, so the pretence to play golf is so they can drink all the time and the club to increase its profit.

What happen to the DRINK SAFE theme, now it will be drink all day and drive home drunk, well hope none of our kids are on the road when they do. Is this going to be a think for other sporting clubs that have a liquor licence? Will they apply for their grounds to come under the liquor licencing act, say the hockey club, football club, cricket club and so on. Well then the kids can always play in the middle of the street or we just have them play on their iPad, phones or computers. **NO SPORT FOR UNDER 18.**

Paul Lewis  
Cuballing

The Cuballing Golf Club has held a Restricted Club Licence for the sale of alcohol for many years. The Club is required to comply with the conditions of this licence and a key component of this is the responsible service of alcohol.

As part of the Licence conditions the Club is only permitted to sell alcohol in the identified licenced area. After a recent audit by a Premises Inspector of the Racing, Gaming & Liquor Department of it was recommended that the Club should apply to change the identified licenced area to include the new patio area the Club is hoping to construct shortly. The Club was also advised that it was possible to extend the licenced area to allow the sale of alcohol, under all the conditions of their Restricted Club Licence, to include the golf course area. This is attractive to the Club to better cater for our larger golf events, attended by visiting golfers, which are important fund raising events for the Club.

Under the conditions of the Restricted Club Licence sale of alcohol is restricted to certain hours on weekends. Outside of these times, the current licenced area, and any extensions that may be granted, is not legally considered a licenced area.

The Cuballing Golf Club has leased the golf course from the Shire of Cuballing and the Club pays for all the water, power and other ongoing maintenance costs. Club members have recently painted the club house, maintained the fire breaks on the golf course and invest ed in improvements in the buildings and golf course. The Cuballing Golf Club meets all these costs by fund raising completed by members.

While the Cuballing Golf Club has a healthy membership, the Club always welcomes visiting players to use the golf course. The Club has junior members and would happily welcome more. However the Golf Club doesn't think it is appropriate for children to be at the golf course unsupervised. While the Club actively tries to ensure the golf course is safe, if children are using the course, the Club requires them to be supervised by an adult.

I would welcome the opportunity to further explain the Cuballing Golf Club's position on access by children to the golf course. Please call me on 0429 898 214.

Anthony Mort  
President - Cuballing Golf Club.

Office Opening Hours:  
Monday—Thursday,  
8.30am—4.30pm  
Friday,  
8.30am—4.00pm

PO Box 13  
Cuballing WA 6311  
Ph: 08 9883 6031  
enquiries@cuballing.wa.gov.au  
www.cuballing.wa.gov.au

## WASTE OIL RECYCLING

The waste oil collection facility that has previously been located at Yornaning has been relocated to the new, under cover location at the Cuballing Transfer Station.

At the new site, spillages can be contained and contamination from water will be eliminated.

Local residents can unload waste oil during normal transfer operating hours.

Currently the waste oil facility can only accept small drums that can be physically tipped into the collection tank. A new pump is being purchased to empty large drums and pods.



## DISABILITY ACTION AND INCLUSION PLAN 2019 — 2024

The Shire of Cuballing is seeking feedback on all aspects of their on all aspects of their draft Disability Access and Inclusion Plan.

The draft Disability Access and Inclusion Plan seeks to describe how the Shire of Cuballing will working to make sure its services are accessible to everyone including people with disabilities.

The draft plan can be viewed on the Shires website [www.cuballing.wa.gov.au](http://www.cuballing.wa.gov.au) or copies can be made available on request and in alternative formats if required.

To register your comments please forward them in writing to:

- Shire of Cuballing, PO Box 13, Cuballing WA 6311; or
- email [enquiries@cuballing.wa.gov.au](mailto:enquiries@cuballing.wa.gov.au).

This stage of the community consultation process closes on Wednesday 6<sup>th</sup> June 2019. After that time all information received will be reviewed prior to formal consideration by Council.

For more information contact Gary Sherry at the Shire Office.

## ADMINISTRATION TRAINEE

The Shire of Cuballing is looking for an enthusiastic, energetic and self-motivated person to take on the role of Administration Trainee as part of our small office.

The successful applicant will work under the direction of the Deputy CEO and complete both on the job training and attending studies off site. Duties will include customer reception, exposure to accounting and record keeping duties and assisting in delivering community events.

The position is offered as a 12 month contract under the conditions of the Local Government Industry Award 2010.

Further information is available on [www.cuballing.wa.gov.au](http://www.cuballing.wa.gov.au) or by contacting Nicole at [enquiries@cuballing.wa.gov.au](mailto:enquiries@cuballing.wa.gov.au) or phone 08 9883 6031.

For a confidential discussion about the position, please call Deputy CEO Bronwyn Dew at the Shire Office or 0498 836 868. All enquiries and applications will be treated with utmost confidentiality.

Applications close with the undersigned by Thursday 9<sup>th</sup> May 2019.

**Gary Sherry**  
Chief Executive Officer  
PO Box 13  
CUBALLING WA 6311

## YORNANING DAM GRANT FUNDING CONFIRMED

Further to a recent public meeting with neighbours and interested local residents in March 2019, the Shire of Cuballing has secured further funding for the continuation of rehabilitation projects at Yornaning Dam. The Shire has received \$32,000 for continued rehabilitation of native vegetation and improving the walk trails around the dam including a boardwalk section across the southern dam wall.

The Shire will continue to seek further funding for new shade shelters, picnic benches and solar lighting. Further extensions of the walk trails in future years are also planned and funding submissions are being prepared.

Office Opening Hours:  
Monday—Thursday,  
8.30am—4.30pm  
Friday,  
8.30am—4.00pm

PO Box 13  
Cuballing WA 6311  
Ph: 08 9883 6031  
[enquiries@cuballing.wa.gov.au](mailto:enquiries@cuballing.wa.gov.au)  
[www.cuballing.wa.gov.au](http://www.cuballing.wa.gov.au)

## UPCOMING EVENTS—MAY

# Australia's Biggest Morning Tea

Every dollar raised helps support  
those impacted by cancer.

When: 23rd May 2019

Where: Cuballing Roadhouse

Time: 10.00am

Details: Tea, Coffee and Cake for donation. All proceeds to the Cancer Council

[biggestmorningtea.com.au](http://biggestmorningtea.com.au)



Office Opening Hours:  
Monday—Thursday,  
8.30am—4.30pm  
Friday,  
8.30am—4.00pm

PO Box 13  
Cuballing WA 6311  
Ph: 08 9883 6031  
[enquiries@cuballing.wa.gov.au](mailto:enquiries@cuballing.wa.gov.au)  
[www.cuballing.wa.gov.au](http://www.cuballing.wa.gov.au)



EveryClub

# NOT FOR PROFIT GOVERNANCE 101

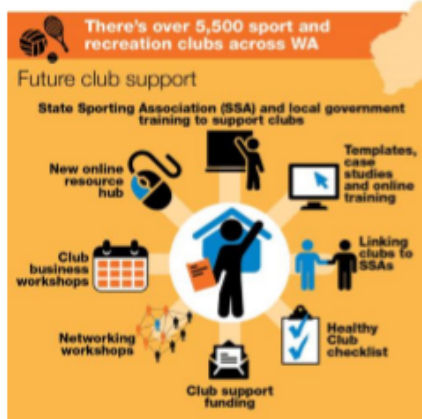
An interactive and engaging workshop with **Caroline Robinson** of Wheatbelt Business Network.

Tips and strategies on:

- How to run an effective meeting
- How to hand the baton over to new committee members
- How to find them (new committee members)
- As well as a discussion on forward planning for your group
- Caroline is also available to review your constitution so it is in line with the **new Associations Act**.

A well know Wheatbelt local, Caroline leads the consultancy unit of WBN, specializing in governance for not for profits, strategic planning for local government, community groups and businesses as well as community engagement and consultancy.

A must attend event for anyone who is interested, part of a community group or sporting organisation. All welcome



**DATE : 7 MAY 2019**

**TIME: 6:30pm**

**WHERE : Cuballing Rec  
Centre – Campbell  
Street**

**Light refreshments**

**Bring your constitution**

**Bring questions**

**Take away tips, strategies,  
new ideas**

**RSVP for catering**

Let us know if you would like Caroline to review your constitution



Office Opening Hours:  
Monday—Thursday,  
8.30am—4.30pm  
Friday,  
8.30am—4.00pm

PO Box 13  
Cuballing WA 6311  
Ph: 08 9883 6031  
enquiries@cuballing.wa.gov.au  
www.cuballing.wa.gov.au



# MEN'S & WOMEN'S SHED MATTERS

Those Dryandra Village tables and benches are getting a very thorough makeover with several ladies chipping in with considerable enthusiasm; the Dryandra Village board has been very impressed with the end result.

The steel wheel bench seats have hit a bit of a delay as our blacksmith of Dungog fame has had both his knees replaced (with steel of course) and, no, it was not done in the smithy.

The new inverter welder has been a hit with both Sheds; it is much easier to use and produces great results.

John Buise and I have been at the latest Men's Sheds of WA (MSWA) Zone meeting in York and one of the main items on the agenda was that they have now a permanent person looking to promote Veterans to enrol in Men's Sheds as it has been demonstrated that they receive great benefit from that.

By the way, the term Veteran now also includes anyone who has served or is serving in the SES, ambulance, fire service or police force.

The Sunshine harvester, that was donated to the Cuballing Shire, will be placed in the display shelter opposite the roadhouse; the Men's Shed will assist with transport and rearranging the display.

The defibrillator has not arrived yet but the good news is that the Shire will assist with the upkeep of it.

John Buise collected another small trailer load of pine that was donated by a Perth Men's Shed.

Anyone who has some timber lying around that they wish to donate, just give us a call and we'll pick it up – or if you are feeling very generous, drop it off at the Shed on Tuesdays or Thursdays.

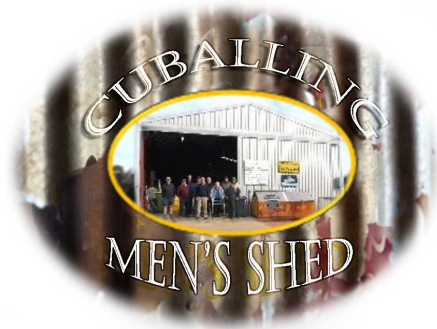
Shortly, our "The Cuby Festival" committee will meet with the Golf Club committee to lay the groundwork for next year's festival; the golf course is an ideal venue for the event and it's good to have more organizations benefit from it.

The other day, I made a cross bow from an old caulking gun and took it to the in-house Dillons Men's Shed and several resident seniors took part in target shooting; they hit a surprising amount of cans and had a ball (pun intended).

We have enrolled 3 members for a St John first aid course in Narrogin and 2 members for a mental health first aid in Perth; this is supported by MSWA and, as we are dealing with an ageing membership, is a valuable asset.



Carry Van Empel  
Secretary  
Cuballing Men's Shed Inc.  
97 Alton Street  
PO Box 33  
Cuballing WA 6311  
Mob 0481 369 156  
[cubyshed@mensshedsWA.org.au](mailto:cubyshed@mensshedsWA.org.au)



# COMMUNITY NOTICES

Tara: 0427 333 171

Email: [tabasper@gmail.com](mailto:tabasper@gmail.com)

## TARA COOK YOGA

Facebook: Tara Cook Yoga - Breath Of Life

Instagram: [@taracookyoga](https://www.instagram.com/taracookyoga)

Classes running in 2019

Monday Wagin 930am

Tuesday Wickopin 930am

Tuesday Dudinin 6pm

Wednesday Wagin 930am

Thursday Dumbleyung 9am

Friday Darkan 10am





# Landcare matters

Hotham-Williams sub-catchment update



**PHCC** Working Together  
Peel-Harvey Catchment Council

Edition 31  
May 2019

NRM is the management of natural resources such as land, water, soils, plants and animals. It brings together land use planning, water management, biodiversity conservation and sustainability of industries such as agriculture, mining, tourism, fisheries and forestry.

## Saltbush Field Day

PHCC hosted a Saltbush field day on Monday 8th April on 3 vastly different Saltbush production areas surrounding Cuballing. Dustin McCreery of Chatfields Nursery shared insights and knowledge into the management and benefits of saltbush.

The event was attended by 10 very engaged farmers who were keen to understand site selection and stock management.

Key Saltbush insights included:

- It can make up to 30% of a sheep's diet and can fill the autumn feed gap

- Saltbush is resilient and can be grazed quite hard
- Planting increases production of marginal or salt-affected lands and lowers water tables
- Selection of species/varieties should be based on soil type and location; trial different species in different locations
- Start small to learn how best to fit it into your farm and grazing management
- Anameka Saltbush has been selected for its agronomic traits, palatability to sheep and nutritional value. It needs to be ordered at least 1 year in advance



Dustin McCreery of Chatfields Nursery showing participants the finer points of the Saltbush plant

## 1080 Baiting Workshop



Seven proactive farmers completed their 1080 baiting accreditation training at the DPIRD Office in Narrogin on 11th April.

Thank you to Mike Clark from DPIRD who taught landholders how to safely use 1080 to control introduced animals, including foxes, to protect stock and threatened species from being predated.

If you are interested in completing your 1080 training later in the year please contact Christine on 0455 166 780 or [christine.townsend@peel-harvey.org.au](mailto:christine.townsend@peel-harvey.org.au)

## The 2019 State NRM Community Stewardship Grants are open!

Supporting community-based projects that serve to protect and restore the local environment. Applications close **Monday 10th June 2019**. More information: [www.nrm.smartygrants.com.au](http://www.nrm.smartygrants.com.au)

## Feral Cat Workshop "The Cuballing Cougar"

Local Cuballing landholders and residents recently attended a Feral Cat Workshop titled 'The Cuballing Cougar'. We were able to see a live feed of the feral cat trapping that was taking place at the Cuballing and Popanyinning refuse sites.

It was very interesting (and concerning) to learn how feral cats carry diseases such as toxoplasmosis and sarcocystis, which cause ewes to abort lambs and cause cysts in their meat. This results in huge economic losses to sheep farmers.

Working together to control feral cats will help to stop the spread of these

diseases and also help to protect native threatened species, like our precious numbat, from predation.

Thank you to WA Feral Animal Management for running the workshop and to everyone who attended.



## Coming Up...

**30 APRIL** State NRM Community Stewardship Grants Workshop

Do you have an NRM event you would like us to promote? Please contact Mel Durack at [melanie.durack@peel-harvey.org.au](mailto:melanie.durack@peel-harvey.org.au) or 0455 166 780



These projects are supported by the Peel-Harvey Catchment Council through funding from the Australian Government's National Landcare Program, Newmont Boddington Gold and the Shires of Boddington, Cuballing, Wandering and Williams

[melanie.durack@peel-harvey.org.au](mailto:melanie.durack@peel-harvey.org.au)

[www.peel-harvey.org.au](http://www.peel-harvey.org.au)





# PUZZLE ZONE

1		8			6	4		
		6		9		8		7
5								
2	6	9	5				8	
			4		9			
	8				2	7	9	1
								5
6		4		7		2		
		1	2			9		3

Sudoku

Medium Difficulty

Word Scramble



## Across

1. Rat-\_\_
5. Took a cut
10. Part of N.E.A.: Abbr.
14. Composer Schifrin
15. Luckless one
16. Nick's spouse
17. Sit heavily
18. Discombobulated
19. Week-ending letters
20. Fraternity event
22. Altar site
23. Fireplace accessory
24. Nike competitor
26. Blocker of "Bonanza"
27. Announced
31. Upward grade
34. Double agents
35. Pres. when SEATO was formed
36. Clinch
37. It's next to the tub
39. Caustic potash
40. Rival
41. Rival of Sparta
42. "\_\_\_ in Show": 2000 film
43. They may involve pawn promotions
45. Go out with
47. "Holy \_\_\_!"
48. Does over, as a cassette
52. A party to
54. Cerebral malfunction, facetiously
57. Corn bread
58. Indian chiefs
59. Die, for one
60. Concluded
61. Tiny type
62. \_\_\_ Bator
63. Utters
64. Birthplace of 35-Across
65. Word that can precede the first words of 20-, 37- and 54-Across, and 11- and 33-Down

1	2	3	4		5	6	7	8	9		10	11	12	13
14					15						16			
17					18						19			
20					21						22			
23								24	25					
			26			27	28					29	30	
31	32	33				34					35			
36					37	38					39			
40					41					42				
43			44					45	46					
		47					48				49	50	51	
52	53				54	55	56							
57					58						59			
60					61						62			
63					64						65			

## Down

- |                                |   |   |
|--------------------------------|---|---|
| 1. Kind of male                | 21. Time in history                         | 44. They're doomed                        |
| 2. Eagle's defense             | 25. Like the universe                       | 45. Has a feeling                         |
| 3. Audibly                     | 27. Hostess snack cakes                     | 46. List shortener: Abbr.                 |
| 4. On deck                     | 28. Shade providers                         | 48. Lasso                                 |
| 5. Apply haphazardly           | 29. Dreyer's ice cream, east of the Rockies | 49. Austrian Nobel physicist Wolfgang ___ |
| 6. Odin's Germanic counterpart | 30. Off! ingredient                         | 50. Put in prison                         |
| 7. Cold War inits.             | 31. Teeming                                 | 51. Shell out                             |
| 8. Depilatory brand            | 32. Cathedral image                         | 52. Financial pg. highlights              |
| 9. It's not clearly defined    | 33. Start-up capital                        | 53. PBS science series                    |
| 10. Involve                    | 34. FHA loan                                | 55. Fad                                   |
| 11. Tot's pool stroke          | 37. False god                               | 56. Comet competitor                      |
| 12. "Exodus" author            | 38. Child on a base                         |   |
| 13. Bistro                     | 42. Den denizen                             |   |

# TASTY BITES—Lemon and yoghurt syrup cakes

- 60ml (1/4 cup) solid coconut oil
- 2 1/2 tablespoons coconut sugar
- 150g (1 cup) white spelt flour, sifted
- 2 eggs, separated
- 1/2 teaspoon baking powder
- 1/4 teaspoon bicarbonate of soda
- 2 teaspoons lemon rind, finely grated
- 150ml low-fat Greek yoghurt
- 2 tablespoons lemon juice
- Low-fat Greek yoghurt, extra, to serve

## LEMON SYRUP

- 60ml (1/4 cup) lemon juice
- 2 tablespoons coconut sugar
- 1 lemon, zested



## Method

### Step 1

Preheat oven to 180C/160C fan forced. Grease six 125ml (1/2 cup) dariole moulds and line the bases with baking paper. Use electric beaters to beat the oil and sugar in a bowl until pale and creamy. Add 2 tbs of the flour and beat until combined. Add yolks, 1 at a time, beating well after each addition. Stir in baking powder, bicarb, lemon rind and half the remaining flour. Stir in half the yoghurt and half the lemon juice. Repeat with the remaining flour, yoghurt and lemon juice, stirring until a stiff batter forms.

### Step 2

Use clean electric beaters to beat egg whites in a clean dry bowl until soft peaks form. Fold half the egg white mixture into the batter. Fold in the remaining egg whites. Spoon into the prepared moulds. Place on a baking tray and bake for 20-22 minutes or until a skewer inserted into the centre comes out clean. Cool in moulds for 5 minutes. Transfer to a wire rack set over a baking tray. Use a skewer to poke 3 holes in each cake.

### Step 3

Meanwhile, for the lemon syrup, combine the juice and sugar in a saucepan over low heat. Cook, stirring, for 2 minutes or until sugar dissolves. Bring to a simmer. Simmer, without stirring, for 2 minutes. Add lemon zest. Simmer for a further 1 minute or until thick.

### Step 4

Pour half the syrup over warm cakes. Set aside to cool completely.

### Step 5

Serve the cakes topped with a spoonful of yoghurt and drizzled with the remaining syrup.

# COMMUNITY NOTICES

## Access via Corrie Street JARRAH FIRE WOOD \$165.00 a cubic meter

Sand, Gravel, Blue metal fines,  
Concrete mix, Vegie mix, Gar-  
den mix, Bushland mulch, Bags  
of Kindling.

Please ring Brian on  
0412 722 219

to arrange for delivery or pickup

### EFTPOS Available

General garden duties

Removal of garden waste & rubbish

Fence repairs

General maintenance & handyman work

Bobcat small and medium jobs

Drive way repairs

Deceased estate cleaning and removal

Place your business ad here.

Prices start at \$8.00 a month

For details

contact 98836 031 or  
cdo@cuballing.wa.gov.au

## HOTZ PLUMBING & GAS

Richard: 0407196 663



Your friendly service.  
On time. Honest. Neat & tidy.  
hotzplumbing@outlook.com  
GF: 6220; PL 5344; BF: 3017

'YOUR NEW PLUMBER'  
fully licenced gas fitter and  
plumber.



Hot water servicing. Burst pipes. Leaking taps. Bathroom renovations  
Storm water. Gutter replacements. Gas servicing. All general plumbing.

Popanyinning Progress Association meetings  
held the last Wednesday of each month at  
6.30pm at the

Popanyinning Hall.

New members welcome

Next Meeting 29<sup>th</sup> May 6.30pm



## NgN-Cuby Stock Feed

Narrogin  
GasworX

### ALL YOUR PET AND LIVESTOCK NEEDS

HORSE – Feed - Nutrition – Medical - Accessories

POULTRY – Mixes - Crumbles

DOG – Kibbles – Rolls – Tins - Accessories

CAT - Biscuits

BIRD – Seed Mixes, Aviary, Parrot

SHEEP – Cubes

HAY BALES & ROLLS

DELIVERIES AVAILABLE  
WEEKLY

SPECIALIST FEEDS  
AVAILABLE ON ORDER  
FOR ANY ANIMAL

24 Fairway Street, Narrogin

www.narrogingasworx.com.au

Ph: 9881 2005

## Peter Rundle MLA Member for Roe

Narrogin Office

PO Box 378, Narrogin WA 6312

Ph 08 9881 1225

Fax 08 9881 3082

Esperance Office

107 Dempster St, Esperance WA 6450

Ph 08 9071 6555

Fax 08 9071 6788

Peter.Rundle@mp.wa.gov.au

www.peterundle.com.au

@PeterRundleMLA

facebook.com/PeterRundleRoe



THE NATIONALS  
for Regional WA



# COMMUNITY NOTICES



119 FEDERAL STREET, NARROGIN

9843 2186

## NEED AN ULTRASOUND??



Come and see our friendly, expert team at **NARROGIN ULTRASOUND**

We perform all types of Ultrasound Examinations including:

*General, Vascular, Musculoskeletal, Small Parts, Paediatrics and Obstetrics. Obstetric Ultrasound includes 3D/4D images.*

**NO WAITING LIST!**

BULK BILLING AVAILABLE FOR CONCESSION CARD HOLDERS AND CHILDREN UNDER 16

[www.narroginultrasound.com.au](http://www.narroginultrasound.com.au) [info@narroginultrasound.com.au](mailto:info@narroginultrasound.com.au)

Facebook: Narrogin Ultrasound

Fire Breaks &  
Slashing  
Popanyinning  
Darrel Marwick  
0497 555 961



## Popo Market Day

Sunday 5<sup>th</sup> May

8am—12pm

Located in the main street, look for the yellow flags

Railway Museum open to the general public

Stalls still available @ \$10.00

Further info or to book a stall, Text 0427 619 591

Lollies  
Rusty Creations  
Tupperware  
Shopping Bags  
Jewellery  
Preserves  
Nic Nacs

Vinyl Decals  
Succulents  
Soaps  
The Breadwright  
Food & Drinks  
And more

## COMMUNITY CALENDAR — May 2019

Sun 5 <sup>th</sup>	May	Market Day Popo 8am—12pm main street
Mon 6 <sup>th</sup>	May	Line Dancing 6pm @ Cuballing Agricultural Hall
Tue 7 <sup>th</sup>	May	Craft Day @ Cuballing CWA Hall
Tue 7 <sup>th</sup>	May	Men's Shed Meet @ Cuby Men's Shed 9am
Wed 8 <sup>th</sup>	April	Cuballing Volunteer Action Group meet 6.30pm @ Cuby Rec Centre
Thurs 9 <sup>th</sup>	May	Women's Shed 1pm –4 pm @ Men's Shed
Mon 13 <sup>th</sup>	May	Line Dancing 6pm @ Cuballing Agricultural Hall
Tues 14 <sup>th</sup>	May	Men's Shed Meet @ Cuby Men's Shed 9am
Tues 14 <sup>th</sup>	May	Craft Day @ Cuballing CWA Hall
Thurs 15 <sup>th</sup>	May	Women's Shed 1pm –4 pm @ Men's Shed
Mon 20 <sup>th</sup>	May	Line Dancing 6pm @ Cuballing Ag Hall
Tues 21 <sup>st</sup>	May	Men's Shed Meet @ Cuby Men's Shed 9am
Tues 21 <sup>st</sup>	May	Craft Day @ Cuballing CWA Hall
Thurs 23 <sup>rd</sup>	May	Women's Shed 1pm –4 pm @ Men's Shed
Thurs 23 <sup>rd</sup>	May	Cancer's Biggest Morning Tea 10am to 11am Cuby Roadhouse
Mon 27 <sup>th</sup>	May	Line Dancing 6pm @ Cuballing Agricultural Hall
Tues 28 <sup>th</sup>	May	Men's Shed Meet @ Cuby Men's Shed 9am
Tues 28 <sup>th</sup>	May	Craft Day @ Cuballing CWA Hall
Wed 29 <sup>th</sup>	May	Popanyinning Progress Association meeting 6.30pm @ Popanyinning Hall

---

To add an event to the Community Calendar you can email your event details to [enquiries@cuballing.wa.gov.au](mailto:enquiries@cuballing.wa.gov.au)